



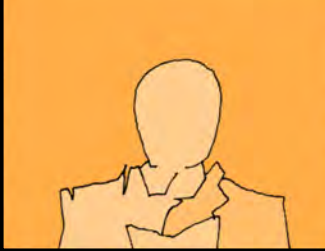
EVOLUTION

CLAUDIU SILVESTRU

... ATMOSPHERE AND THE SEAS
HAS RISEN BETWEEN 1906 AND

2005 BY APPROX. **0.74°C**. TILL
2100 RESEARCHERS FORECAST AN

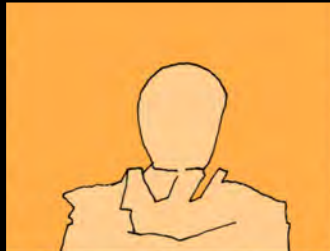
OTHER INCREASE OF 1.1 TO 6.4°C
DEPENDING ON SEVERAL FACTORS,



SUCH AS GREENHOUSE
GAS OUTPUT AND

CLIMATE SENSITIVITY.
STRONGEST AFFECTED BY THE

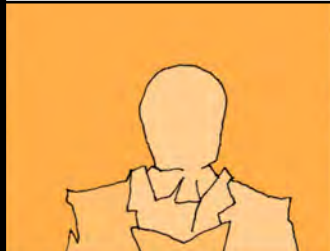
CLIMATE CHANGES IS THE
ARCTIC.



RESULTS OF INCREASING
TEMPERATURES WILL BE THE

RETREAT OF GLACIERS,
SEA LEVEL RISE AND

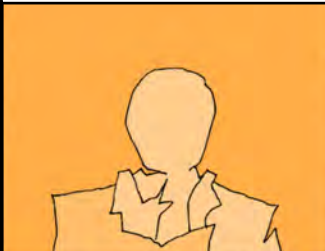
THE DIMINUTION OF POLAR ICE.



WEATHER FORECAST.


IT GETS HOT.

WE EXPECT THROUGHOUT THE
DAY DAZZLING SUNSHINE AND



SOMEPLACE COLD, MORNING NEWS

AND A CUP OF GOOD, HOT COFFEE

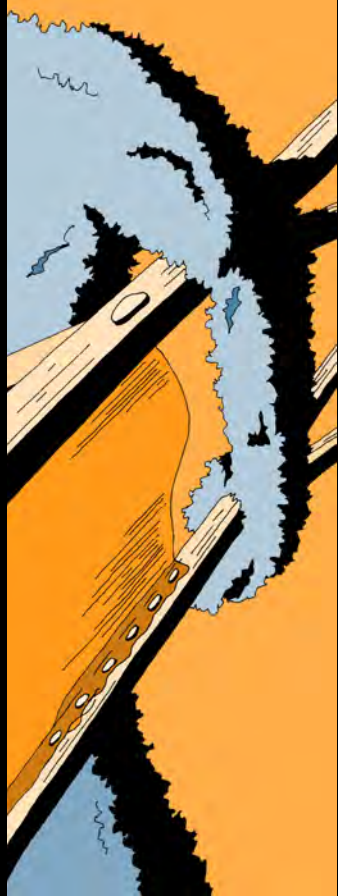


TEMPERATURES ABOVE
AVERAGE...









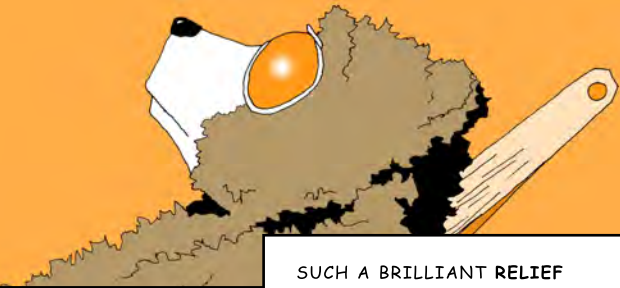
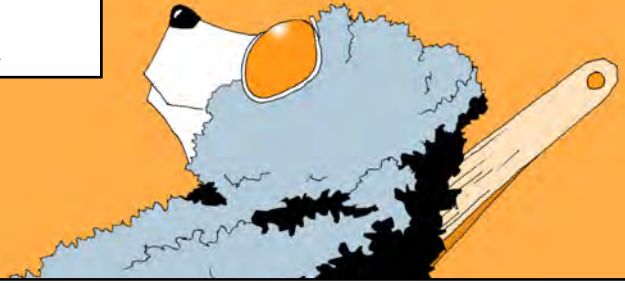


EVOLUTION

by human nature
for all creature types



NATURES ADAPTABILITY IS
SUCH A MARVELLOUS TALENT.



SUCH A BRILLIANT RELIEF
OF CONSCIENCE







ISN'T IT?!?